



## Spring Newsletter 2025



Here's what has happened in the last month and what's to come!

### **Vaccination update.**

We have been informed by NHS England that there will be another Covid vaccination campaign this Spring.

We expect the vaccines to become available towards the end of March.

We have not yet been told who will be eligible for the vaccines but please be assured that if you are eligible we will make contact with you.

### **Flu vaccines, Shingles vaccines, RSV vaccines and Pneumococcal vaccines.**

If you have been called for a flu vaccine but have not yet had it, we do still have some flu vaccines left which are suitable for patients ages 65 or over.

If we see from your record that you may be eligible then we will ask you to make an appointment.

Flu vaccines for this season will no longer be available after stocks have run out at the practice or beyond the end of March 2025.

In this newsletter:

**Vaccination Update**

**Volunteers Needed**

**Ordering Medication.**

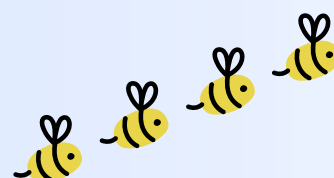
**Patient Participation Event**

**Patient Participation Group Membership**

**Updating your contact details.**

**Tests in secondary care**

**Shingles Vaccine leaflet**



Are you eligible for Shingles?

There have been some confusing messages in the media about this. We have included a information sheet at the end of this newsletter.

If you are eligible for any other vaccine you will be contacted and invited to make an appointment. If you were contacted a while ago but were unable to attend, it is not too late to make an appointment. Most vaccination clinics currently run on Wednesdays.

### **Volunteers Needed**

We are looking for help from volunteers. The reason for the help is to spare some time to show people how to access the NHS app and how to access online appointments via our website.

This would involve being trained by our reception manager then manning a desk in the waiting room to allow people to attend and learn to get set up.

If you are interested, please ask to speak with Joanne Burke our reception manager. (Tuesday to Friday).

### **Ordering Medication.**

Please remember you can order your repeat medications via the NHS app, online via the practice website or via Systmone online.

This will save you visiting the practice to place an order for medications.

### **Patient Participation Event.**

On Wednesday 9th April 2025 the Hoveton and Wroxham medical Centre Patient Participation Group are holding an event at the practice from 6-7.30pm.

At the event there will be a presentation about how the general practice is set up and what the issues in general practice are.

Tea and coffee will be available.

There are limited spaces so please book by emailing [ppg.hwmc@nhs.net](mailto:ppg.hwmc@nhs.net)



**Patient Participation Group Membership.**

If you are interested in finding more out about membership of the practice patient participation group please email [ppg.hwmc@nhs.net](mailto:ppg.hwmc@nhs.net).

**Updating your contact details.**

If you have got rid of your land line in the last few years or have changed your mobile phone number; do please reach out and let us know so that we can be sure your mobile number is on the system and up to date.

We are increasingly using texts to contact you with messages including reminders to attend for health reviews and vaccinations.

**Tests in secondary care.**

If you are awaiting results from investigations requested by the hospital they will contact you directly regarding the results.





UK Health  
Security  
Agency




# Eligibility for shingles vaccine


If you have a severely weakened immune system (as described in the Green book chapter) you will be offered the shingles vaccine from 50 years of age

If you are over 70 years of age and have not had shingles vaccine before you remain eligible up to your 80th birthday

## Turning 70?

ELIGIBLE FROM (YOUR BIRTHDAY)	DATES OF BIRTH	PROGRAMME START DATE	PROGRAMME YEAR
 70 <sup>th</sup>	1 September 1953 – 31 August 1954	1 September 2023	Year 1
	1 September 1954 – 31 August 1955	1 September 2024	Year 2
	1 September 1955 – 31 August 1956	1 September 2025	Year 3
	1 September 1956 – 31 August 1957	1 September 2026	Year 4
	1 September 1957 – 31 August 1958	1 September 2027	Year 5

## Turning 65?

ELIGIBLE FROM (YOUR BIRTHDAY)	DATES OF BIRTH	PROGRAMME START DATE	PROGRAMME YEAR
 65 <sup>th</sup>	1 September 1958 – 31 August 1959	1 September 2023	Year 1
	1 September 1959 – 31 August 1960	1 September 2024	Year 2
	1 September 1960 – 31 August 1961	1 September 2025	Year 3
	1 September 1961 – 31 August 1962	1 September 2026	Year 4
	1 September 1962 – 31 August 1963	1 September 2027	Year 5